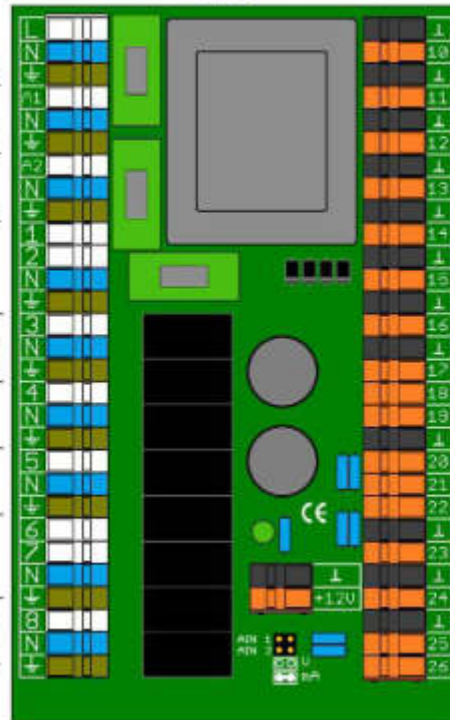


REL-Platine MR07-SPS Modulregler

REL-Anklemmplatine Modulregler MR07-SPS:

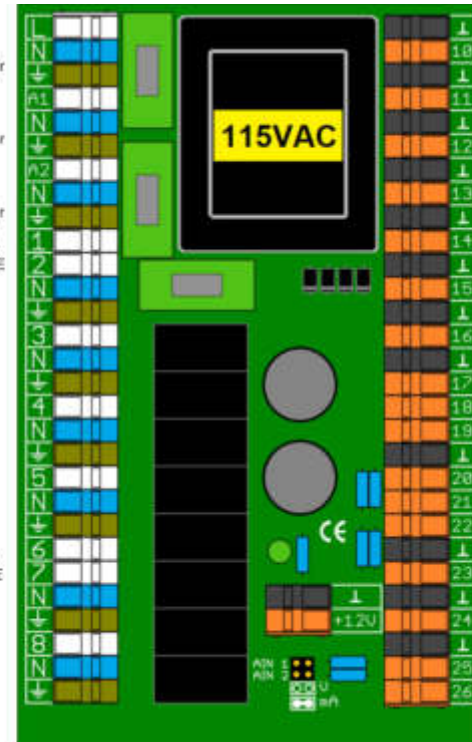
Supply and Outputs
230V~

Supply feed 230VAC		L Phase N Neutral Conductor PE Protective Conductor
Output for HC-Module 1/2/3 230VAC		L Phase N Neutral Conductor PE Protective Conductor
Output for HC-Module 4/5/6 230VAC		L Phase N Neutral Conductor PE Protective Conductor
1	M1 Fernwärmeventil AUF	
2	M1 Fernwärmeventil ZU	
N	M1 Fernwärmeventil N	
PE	M1 Fernwärmeventil PE	
3	P1 Heizungspumpe Kreis 1	
N	P1 Heizungspumpe Kreis 1 N	
PE	P1 Heizungspumpe Kreis 1 PE	
4	P2 Boilerpumpe	
N	P2 Boilerpumpe N	
PE	P2 Boilerpumpe PE	
5	P3 Zirkulationspumpe	
N	P3 Zirkulationspumpe N	
PE	P3 Zirkulationspumpe PE	
6	M2 Mischventil Kreis 2 AUF	
7	M2 Mischventil Kreis 2 ZU	
N	M2 Mischventil Kreis 2 N	
PE	M2 Mischventil Kreis 2 PE	
8	P4 Heizungspumpe Kreis 2	
N	P4 Heizungspumpe Kreis 2 N	
PE	P4 Heizungspumpe Kreis 2 PE	



GND	Masse
10	T10 Außentemperatur
GND	Masse
11	T11 Primäre Rücklauftemperatur
GND	Masse
12	T12 Sekundäre Vorlauftemperatur
GND	Masse
13	T13 Boiler-temperatur oben
GND	Masse
14	T14 Boiler-temperatur unten
GND	Masse
15	T15 Sekundäre Rücklauftemperatur
GND	Masse
16	T16 Vorlauftemperatur Kreis 2
GND	Fernbedienung Signale und GND
17	T17 Fernbedienung Heizkreis 1 Temperatur
18	T18 Fernbedienung Heizkreis 1 Signal
19	T19 Fernbedienung Heizkreis 1 VCC
GND	Fernbedienung Signale und GND
20	T20 Fernbedienung Heizkreis 2 Temperatur
21	T21 Fernbedienung Heizkreis 2 Signal
22	T22 Fernbedienung Heizkreis 2 VCC
GND	Masse
23	T23 Temperatur Reserve
GND	Masse
24	T24 Temperatur Reserve
GND	Masse
25	T25 Analogeingang 1 (0-10V/4-20mA)
26	T26 Analogeingang 1 (0-10V/4-20mA)

Supply feed 115VAC		L Phase N Neutral Conductor PE Protective Conductor
Output for HC-Module 1/2/3 115VAC		L Phase N Neutral Conductor PE Protective Conductor
Output for HC-Module 4/5/6 115VAC		L Phase N Neutral Conductor PE Protective Conductor
1	M1 District Heating Valve OPEN	
2	M1 District Heating Valve CLOSE	
N	M1 District Heating Valves N	
PE	M1 District Heating Valve PE	
3	P1 Heating Pump Circuit 1	
N	P1 Heating Pump Circuit 1 N	
PE	P1 Heating Pump Circuit 1 PE	
4	P2 DHW Boiler Pump	
N	P2 DHW Boiler Pump N	
PE	P2 DHW Boiler Pump PE	
5	P3 Circulation Pump	
N	P3 Circulation Pump N	
PE	P3 Circulation Pump PE	
6	M2 3-way Valve Circuit 2 OPEN	
7	M2 3-way Valve Circuit 2 CLOSE	
N	M2 3-way Valve Circuit 2 N	
PE	M2 3-way Valve Circuit 2 PE	
8	P4 Heating Pump Circuit 2	
N	P4 Heating Pump Circuit 2 N	
PE	P4 Heating Pump Circuit 2 PE	



GND	Ground
10	T10 Outdoor Temperature
GND	Ground
11	T11 Primary Supply Temperature
GND	Ground
12	T12 Secondary Supply Temperature
GND	Ground
13	T13 Temperature DHW top
GND	Ground
14	T14 Temperature DHW bottom
GND	Ground
15	T15 Secondary Return Temperature
GND	Ground
16	T16 Supply Temperature Circuit 2
GND	Remote Control Signal and GND
17	Remote Control Heating Circuit 1 Temperature
18	Remote Control Heating Circuit 1 Signal
19	Remote Control Heating Circuit 1 VCC
GND	Remote Control Signal and GND
20	Remote Control Heating Circuit 2 Temperature
21	Remote Control Heating Circuit 2 Signal
22	Remote Control Heating Circuit 2 VCC
GND	Ground
23	T25 Temperature Reserve
GND	Ground
24	T26 Temperature Reserve
GND	Ground
25	AIN1 Analog Input 1 (0-10V/4-20mA)
26	AIN2 Analog Input 2 (0-10V/4-20mA)

SCHNEID Modern Life - Modern Solutions www.schneid.at DE